

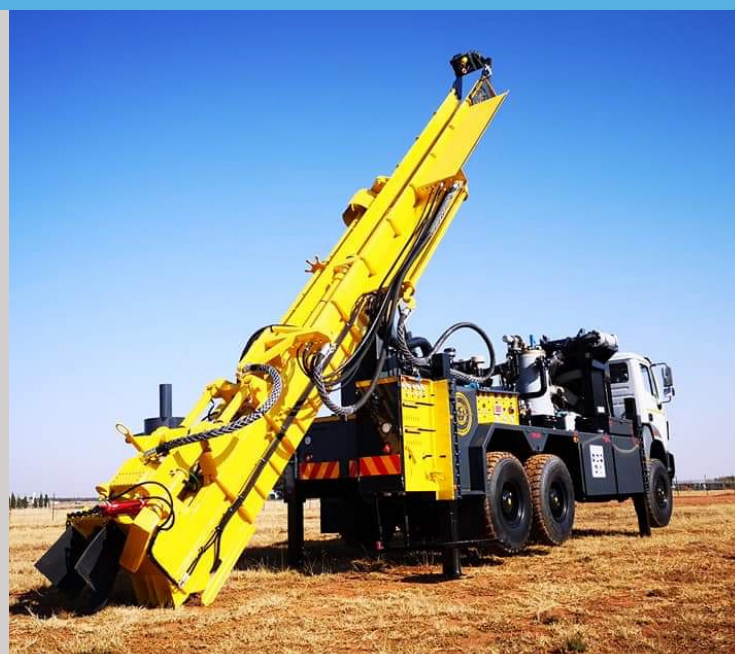


WATER WELL

WW 28T



Water is life, drilling a Borehole will save people and give them access to potable water. From 50 to almost 1200 meters depth THOR will offer you a wide range of drilling rigs suitable for all kind of terrains.



Thor Drill Rig

WATER WELL

WW 28T



TECHNICAL DESCRIPTIONS

DECK ENGINE	140 HP
STANDARD COMPRESSOR	Different options available
DIAMETER RANGES	4" to 24 "
DEPTH CAPACITY	896 m @ 6,5 "
COOLING	Hydraulic cooler fitted
CONTROL SYSTEM	Easy accessible Control panel with clear view for operator
TRUCK / TRACK MOUNTING	Heavy duty steel chassis
TOP HEAD DRIVE /ROTATION HEAD	Reduction gearbox type (grease filled) reduction 3,25:1 spindle hole 80 mm , RPM 0-80, MAX TORQUE 9000 Nm, (18000nM on option) spindle thread -102 ARD, Head can be used for both DTH and Rotary Mud drilling
OUTRIGGERS	4 x steel boxed hydraulic outriggers bore size 100mm, stoke 1000 mm
FEED SYSTEM	Mast tubular construction working with 2 cylinders (no chains or cables)
PULL BACK	28 T @ 220 bar
PULL DOWN	8,4 T @ 300 bar
MAST LENGTH	From 6,6 m to 12 m depending on truck chassis length
OVERALL DEPTH	400 mm
OVERALL WIDTH	600 mm
TOP HEAD TRAVEL /STROKE	4 m to 7,4 m depending on length of mast
MAST SLIDE TRAVEL	Dump mast optional with 1m to 1,8 m stroke
BREAKOUT SYSTEM	Manual keeper spanner, Conventional hydraulic assisted breaker spanner, or hydraulic hands free option.
WINCHES	Standard 500 kg winch as standard (bigger option available)
HYDRAULIC SYSTEM	Open lube hydraulic system with bushing pump running at 300 bar
HAMMER LUBRICATOR	In line venturi type with 15 L capacity
MUD PUMP	Different Mud Pump available to suit applications of customers (Centrifugal/Duplex/Screw pump), hydraulic driven rig mounted or skid mounted diesel unit available
FOAM PUMP	Hydraulic driven piston pump 21 L/min @ 200bar
ELECTRIC SYSTEM	12 & 24 volts with options of working lights, emergency stops, and lock out depending on customer needs.
AIR LINES	All air lines are rated at 80 bar with whip safety socks on all ends with booster line as option
DEPTH CALCULATION EXPLANATION	All depth calculations are theoretical based on different rod/m weight with 20% safety margin worked in 4,5 " rods @ 25kg/M These capacities are based on the hydraulic capacities of the drilling rigs.



THOR DRILL RIG CC MANUFACTURERS OF DRILLING EQUIPMENT
Plot 78 Vaalbank, R104 rd to Bronkhorstspuit, 1055. PO Box 1881 Rayton, 1001
South Africa. Tel :+ 27 12 736 2345. marianna@thordrill.co.za len@thordrill.co.za



@thordrill



<https://www.thordrill.co.za/>